

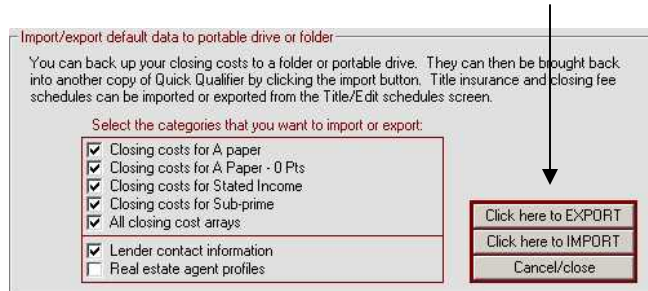
Using a “flash drive” to backup Quick Qualifier setup defaults

A flash drive is a portable drive that can be plugged into the USB port on your computer. Memorex calls them a Travel Drive. You can buy them at Staples or Circuit City for about \$15. They are very useful computer tools.

Step 1 To save setup defaults, click Import/Export in the Setup Screen



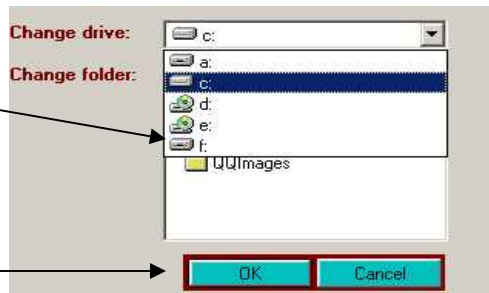
Step 2 Select the categories that you want to backup up and click “Click here to EXPORT”



Step 3 Change to your flash drive. Click on the letter designating your USB drive.

If you do not know which it is, click My Computer to view your drives.

Then click OK to export.

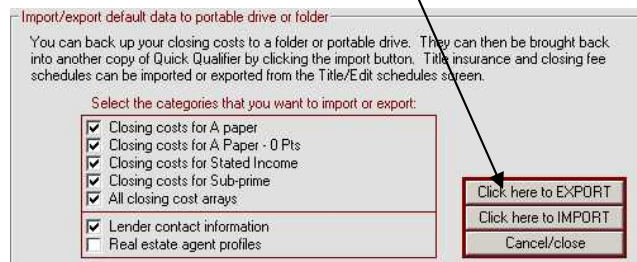


Instructions for importing setup defaults from a “flash drive”

Step 1 To retrieve setup defaults, click Import/Export in the Setup Screen



Step 2 Now you simply reverse the process by clicking “Click here to IMPORT”



Step 3 First select letter designating your flash drive. Again, if you can't find it, use My Computer to view your drives.

Next, click on QQSetupFiles.

Then click OK and your files will be imported into the computer.

